



**CONCENTRATED
ORGANIC SEAWEED
EXTRACT FROM
THE SPECIES
ECKLONIA MAXIMA**

CERTIFIED FOR ORGANIC FARMING



DATE OF MANUFACTURE:

29.09.2009

DATE OF EXPIRY:

29.09.2012

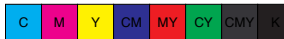
BATCH NO.:

2909.09

DISTRIBUTED BY ORGANIX LIMITED
P.O.Box 14494, Nairobi 00800 Kenya
Tel: +254 20 374 1482 / 356 6241/2
e-mail: enquiries@organix.agro.com

NET CONTENTS:

5L



Scientific research has shown that Kelpak enhances root development with improved utilization of soil nutrients and fertilizers resulting in better top growth.

Kelpak not only greatly improves crop yields, but also strengthens overall plant growth producing healthier crops with less disease problems and higher resistance to stress.

What is Kelpak:

Kelpak is manufactured from freshly harvested seaweed using a unique process that does not involve the use of chemicals, freezing, heat or dehydration. This "cell burst" technique ensures that the delicate growth regulators are released in their natural active form. Kelpak should be used in conjunction with your normal fertilizer programme.

When to use:

Kelpak should be applied during the initial growth stages of crops. Trials have shown that Kelpak, when sprayed with herbicide, reduces plant setback/herbicide shock on cereals.

DIRECTIONS: Use only as directed. Shake well before use. Kelpak should not be applied in a spray solution with a pH above 7, never be more dilute than 1:500 and should not be applied more frequently than 14 days apart. Kelpak is compatible with most standard herbicides, insecticides and liquid fertilizers, although a small compatibility mix is recommended prior to tank mix. When used through irrigation systems, Kelpak should be introduced during the last 10 minutes of irrigation, preventing dilution beyond 200 ml/100 L water. For best results apply in conjunction with a wetter/sticker in the spray solution.

DILUTE KELPAK IN SUFFICIENT WATER AND APPLY AS PER FOLLOWING CALIBRATIONS:

CROP	DOSAGE	TIMING
BEANS Dry/Green	2 L/ha	Spray at 3 to 4-leaf stage and repeat once or twice at 14 days intervals
FLOWERING & ORNAMENTAL PLANTS	1:100 dilution 1:400 dilution	Dip tray with seedlings in solution, or wet seedling tray/bag with watering can before transplant Spray at 14 days after emergence or plant-out Repeat 2 to 3 times at 21 to 28 day intervals
FRUIT TREES New plantings	1:100 dilution or 1:200 dilution or 1:500 dilution and 1:300 dilution	Dip bare roots for 5 minutes before transplant, or Soak seedling bag before transplant, or Soak soil around trees after plant-out, or Apply through irrigation system after transplant and Spray 3 to 5 times during early active growth at 21 day intervals
Evergreen	3 L/ha	Spray at pre-bloom, full bloom, fruit set and, optional, 14 to 21 days later. If water volume exceeds 1000 L/ha, increase Kelpak rate to retain 1:300 dilution
MAIZE	2 L/ha	Spray at 3 to 5-leaf stage
POTATOES	1:300 dilution 2 - 4 L/ha 2 L/ha	Dip seed potatoes before planting for approximately 5 minutes, or spray in furrow before covering Spray after emergence as soon as enough leaf surface for absorption is present (14 to 28 days DAE) Spray again 12 to 14 days after first foliar application, but do not apply after tuber initiation
RICE Paddy field (direct sowing) Seedbed treatment	1:400 dilution 2 L/ha	Add to sanitary seed dip before sowing Spray at 14 to 28 days after emergence Spray seedbed after emergence as soon as enough leaf surface for absorption is present and repeat 1 to 2 days before transplant
Field transplant	2 L/ha	Spray 14 to 21 days after transplant
ROSES New planting	6 L/ha 3 L/ha	Drench after planting Spray twice after transplant at 14 to 21 day intervals
Established plants	6 L/ha 3 L/ha	Drench at end of the flush Spray once 14 to 21 days after drench (repeat for every flushing cycle)
SUGAR CANE New planting	1:300 dilution 2 L/ha	Dip stalks of new plantings, or Spray stalks in furrow before covering Spray at 60 to 90 cm leaf length stage
Established fields	2 L/ha	Spray at 60 to 90 cm leaf length stage
VEGETABLES Transplanted seedlings	1:100 dilution 2 - 3 L/ha	Dip tray with seedlings in solution, or wet with watering can before transplant Spray 14 days after transplant and repeat once or twice at 14 to 21 day intervals
Directly sown	2 - 3 L/ha	Spray at 3 to 5-leaf stage and repeat once or twice at 14 to 21 day intervals
WHEAT	2 L/ha	Spray at 4 to 6-leaf stage



MANUFACTURED BY KELP PRODUCTS (PTY) LTD, SOUTH AFRICA

www.kelpak.com

STORE IN A COOL DRY PLACE | SHAKE WELL